



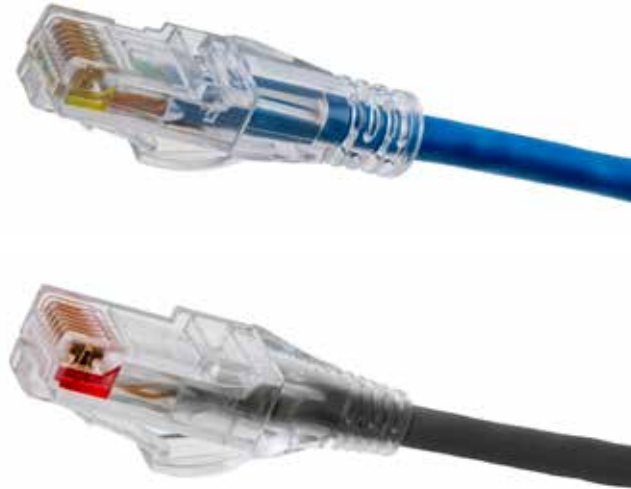
NEXTSPEED® Low Diameter Patch Cords

Category 6 and 6A

HCL series low diameter patch cords from Hubbell reduce cable congestion associated with high density installation in data centers, wall mount enclosures, and Category 6A panels. These cords greatly improve airflow, cooling, and cord management.

HCL cords are designed to exceed TIA component limits for NEXT and Return Loss. They utilize #28AWG stranded conductors that are extremely flexible and easy to manage. This gauge is below current TIA-568 specifications and, as a result, these cords have an increased de-rating factors and limitations on PoE applications. See Application Notes below to properly utilize.

Lower your switch operating temperatures and simplify your cable management with HCL series cords from Hubbell.



FEATURES

- Over 50% cross sectional area reduction on 6A provides improved air flow
- High flexibility: stranded conductors with soft, flexible cable jacket provide easy cable management
- Plug optimized: allows for easy access to high density switch ports
- ETL Verified for TIA Component NEXT and Return Loss
- Designed to exceed TIA component NEXT and Return Loss values
- S-shield provides superior ANEXT control on 6A version
- Improved bend radius: 63% improvement on C6A and 40% on C6
- Reduced airflow resistance and improved cooling
- Over 30% reduction in weight puts less stress on cable support infrastructure
- Soft flexible cable for easy cable management
- Backwards compatible to lower categories

APPLICATION NOTES

- De-rating factor:
 - Cat 6A: 1.9
 - Cat 6: 1.8
- Maximum channel with PoE: 131ft (40m)
- Maximum bundle:
 - 802.3bt = 24 cables
 - 802.3at = 48 cables



NEXTSPEED® Low Diameter Patch Cords



NEXTSPEED® Low Diameter Patch Cords

Description	Catalog No.
Ascent Category 6A O.D. = 0.186" NOM	HCL6Axxyy
Category 6 O.D. = 0.150" NOM	HCL6xxyy
xx = Color: BK (Black), B (Blue), GY (Gray), GN (Green), OR (Orange), P (Purple), R (Red), W (White) and Y (Yellow)	
yy = Length of 01, 03, 05, 07, 10, 15, 20, 25 and 30 feet	



NEXTSPEED® Ascent Jacks

Unit of Measure	Category 6A Catalog No.	Category 6 Catalog No.
Single pack	HJ6Axx	HXJ6xx
25-pack	HJ6Axx25	HXJ6xx25
xx = Color: BK (Black), B (Blue), EI (Electric Ivory), GL (Gold), GY (Gray), GN (Green), OW (Office White), OR (Orange), P (Purple), R (Red), W (White) and Y (Yellow)		
Note: Gold and Purple available in 25-pack only.		

Category 6A Component Patch Panels, 19"

Format	Color	24-Port, 1RU	48-Port, 2RU	96-Port, 4RU
Standard	Black	HP6A24	HP6A48	HP6A96
Standard	White	HP6A24W	HP6A48W	-
Angled	Black	HP6A24A*	HP6A48A*	-

*Angled panels protrude 4.46" from the plane of the rack. One extra inch of space is recommended between the door and panel angle.

Category 6 Patch Panels, 19"

Format	Color	24-Port, 1RU	48-Port, 2RU	96-Port, 4RU
Standard	Black	HP624	HP648	HP696
Standard	White	HP624W	HP648W	HP696W
Angled	Black	HP624A*	HP648A*	-

*Angled panels protrude 4.46" from the plane of the rack. One extra inch of space is recommended between the door and panel angle.

Jack Patch Panels, Unloaded, 19"

Format	24-Port, 1RU	48-Port, 2RU	72-Port, 3RU	High-Density, 48-Port, 1RU
Standard	HPJ24	HPJ48	HPJ72	UDX48E1U
Angled	HPJ24A	HPJ48A	-	UDX48A1U

HCL6A Series Patch Cord vs. Total Channel Length

Max. Patch Cord Length* (28 AWG)		Horizontal Length (23 AWG)		Max. Channel Length	
Meters	Feet	Meters	Feet	Meters	Feet
6	21	90	295	96	316
7	24	88.5	290	96	314
8	27	86.5	283	95	310
9	31	84.5	277	94	308
10	33	83	272	93	305
11	37	81	265	92	302
12	40	79	259	91	299
13	44	77	252	90	296
14	47	75	246	89	293
15	49	73.5	241	89	290
16	53	71.5	234	88	287
17	56	69.5	228	87	284
18	60	67.5	221	86	281

*Note: TIA channel allows 33ft max total patch cord length.

